

WATERFRONT COPINGS INSTALLATION GUIDELINES

Please read carefully before beginning installation.

IMPORTANT INFORMATION REGARDING OUR WATERFRONT COPINGS PRODUCTS

The owner or owner's representative is responsible for determining the acceptability of the product. Prior to installation INSPECT ALL PIECES to verify color and finish. Notify us immediately of any damage, defect, or other issue. Variation in surface, color, shade, shape, and size are inherent in artistic hand-cast concrete. Installation constitutes acceptance.

STORAGE AND JOBSITE CONDITIONS

When shipped from the factory in Southern California, our products are properly stacked and wrapped on the pallet for storage. If the coping must be stored for an extended period, it should be kept on the pallet and remain packaged. It must be stored in a dry, cool location. It is critical that Waterfront Copings is protected from direct sunlight and moisture.

Once installed, concrete will have a very long service life. We stress that care be taken in the transport, storage and pre-installation handling of our products as that is the time in which they are most susceptible to damage.

CUTTING GUIDELINES

Cutting Guidelines

Please review the following guidelines for cutting Waterfront Copings.

Please use a quality non-segmented continuous rim diamond blade made for wet saw only to cut Waterfront Copings products.

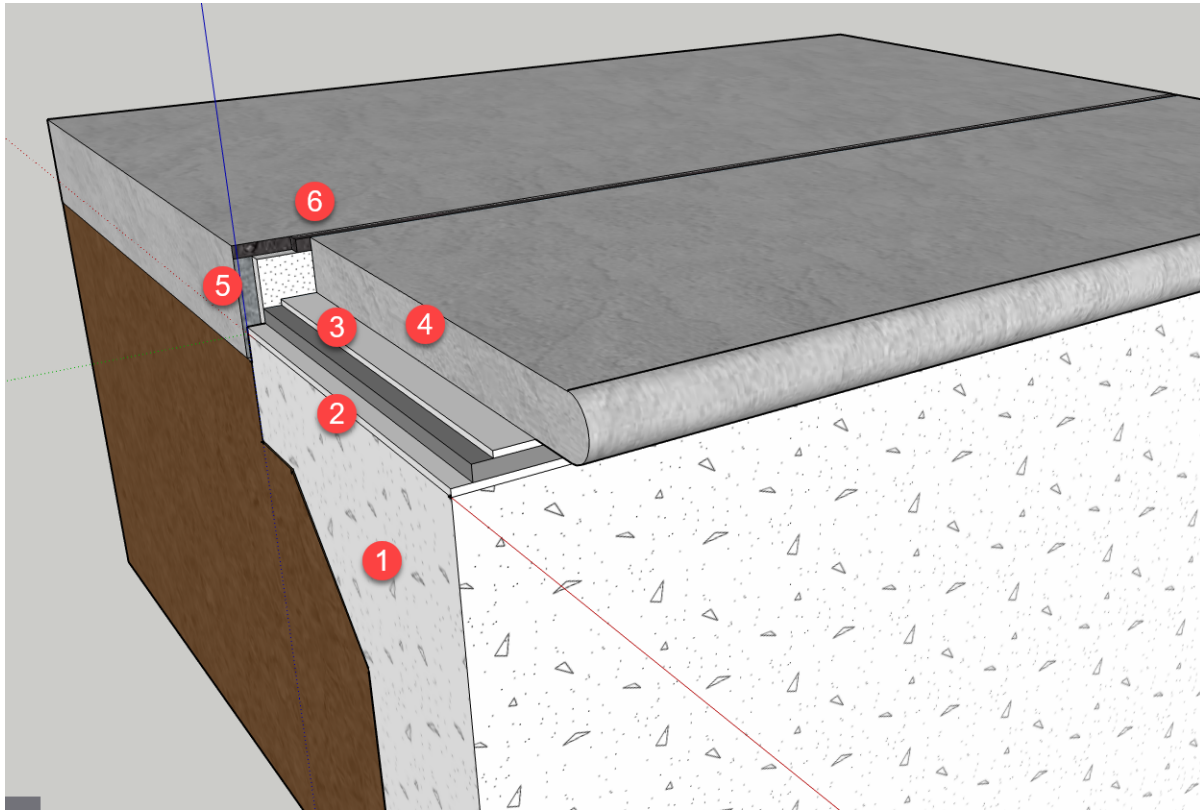
- We recommend **WET** cutting **ONLY**
- Do **NOT** dry cut using power tools
- Improper cutting techniques could expose installer to harmful dust



California Residents Only - Prop 65

- **WARNING:** This product can expose you to silica dust that is known to the State of California as harmful. Airborne particles of respirable size are created when product is dry cut or ground. Please strictly adhere to the cutting guidelines. For more information, please visit www.P65Warnings.ca.gov.

INSTALLATION GUIDELINES



1. Concrete shell must be cured a minimum of 28 days prior to installation of precast coping.
 - 1A - All substrates receiving Waterfront Copings shall be cleaned of any oil, paint, dust, debris, etc. Surface shall be prepared, level, and competent of a firm and permanent adhesion to the setting material.
 - 1B - Lightly dampen top of beam or Saturated Surface Dry (SSD): To achieve a properly saturated surface dry condition it is critical to achieve a substrate that is clearly damp below the immediate surface, has no standing water, and has a surface that is showing no signs of a "film" of water on the surface. Ideally the concrete will be clearly damp (typically much darker than dry concrete), but the surface will have no water present and will be showing "signs" of drying.
2. Apply fortified/modified mortar (such as Laticrete 254, TEC Super flex, and or equal) (ANSI A118.4 or better) to bond beam as a bonding agent for leveling float/mortar bed. Use a ¼-by-¼ square notch trowel. While wet, apply mortar/leveling bed consisting of one-part Portland cement (ASTM C-150) to four parts damp sand (ASTM C-144) or equal.
- 3-4. Apply highly modified setting material (such as Laticrete 254, TEC Super flex, and or equal) (ANSI A118.4 or better) to back of cleaned and wiped coping and to existing mortar bed or beam. Set to final or finish grade. Grout joint/spacing is to be no less than 3/8" between coping-to-coping joints. Standard tinted or un-tinted cementitious grout is acceptable for grouting joints.

Important Note: Since the copings come delivered from the factory pre-sealed, it is critical to clean/wipe any over spray from the copings. Prior to installation, please wipe bottom and short sides with a lint free cloth and Acetone to ensure there is no residue on copings prior to installation. Please see Acetone manufacturer's safety precautions prior to application.

5. Before pouring concrete deck directly abutting the coping, installation of expansion foam is required at the coping to deck interface. This is not required if using sand set pavers as decking, though it is best practice to always leave room for expansion at the deck to coping interface.
6. Fill void between deck and coping with an elastomeric polysulfide based joint sealant such as W.R. Meadows' deck-o-seal or equal (if required).

ADDITIONAL INSTALLATION INFORMATION

- After installation it is good practice to protect coping from adverse job site conditions and other trades until pool is filled and balanced.
- In freeze-thaw climates, additional waterproofing/dampproofing consideration may be required to prevent cement mortar bed from water intrusion. (TCNA P-602-22)
- Use a quality, non-segmented continuous rim diamond blade for best results. Always wet cut to avoid exposure to harmful dust.
- Waterfront Copings can be grouted with standard cement/sand or standard cementitious sanded grout.
- Our coping comes from the factory pre-sealed; a small amount of overspray may be present on the sides and back pieces. Make sure to clean sides to be grouted, as sealer may create a bond-breaker. See **Important Note** above at 3-4.
- Waterfront Copings shall be cleaned where necessary by scrubbing with a soft white fiber bristle brush, using a pH neutral non-detergent soap and water. Rinse thoroughly and generously with water. No acid or prepared cleaners shall be used without the approval of Murrine Mosaics.

THINGS TO KNOW ABOUT CONCRETE COPING

All production is done in the USA, exclusively at our factory in California. Each coping is hand cast from individual molds, resulting in a finished edge on all four sides of the coping.

We take great care in the coloring process, ensuring color dispersion throughout the coping. There will be variation in color between pieces, due in part to the purposeful, unique process for color mixing and layering. Additional color variation is created by the natural materials themselves. The sand, cement and pigments are individually — and collectively — changing based on the season, the weather, the quarry and the manufacturing processes. We seek to manage the variances to produce a consistent, beautiful, natural looking concrete product.

Concrete has properties which differ from more common, machine-made materials like ceramic or porcelain tiles. Understanding these inherent characteristics will ensure your long-term satisfaction with these beautiful, unique, and enduring products.

- Pinholes may appear on the surface or edge of the coping. These are air bubbles trapped in the concrete mixture. While most air is released when vibrated during production, a small amount remains.
- The edge or corner of the coping may have slight blemishes due to the natural dispersion of aggregate throughout the body of the coping.
- Shade variation is expected and desirable. Dye lot variation is not an issue due to the controlled manufacturing process. The concrete copings will patina over time.
- The coping may have a slight variation in thickness which is accommodated during the installation process.

CARE AND MAINTENANCE

Maintenance requirements after installation are minimal. Unlike other natural materials, our concrete copings are factory sealed prior to leaving our factory.

Use a neutral cleaner (pH 7.0) for routine cleaning of concrete coping. Follow product label directions for best results. Sweep frequently to remove dirt and debris. Promptly wipe up any spills to minimize risk of staining. For routine cleaning minimize the amount of solution used on the coping. Damp mop and dry promptly for best results. Even with a high-quality sealer, products high in acidity, such as fruit juice, vinegar and wine can etch the surface. Also, extended contact with oil or grease will stain the surface. Certain types of foliage may also stain coping. Care should be taken to promptly remove and rinse these materials from the coping. You have chosen an extremely durable material.

If sealer coat is compromised during cleaning, reapply sealer after area is cleaned and allowed to dry. Clean and reseal in an inconspicuous area first to see if there is any noticeable change in the product. Resealing can be accomplished as part of regular maintenance using a solvent-based sealer **ONLY**.

www.MurrineMosaics.com

Murrine Mosaics provides product information and information concerning installation procedures and maintenance practices to assist each of its customers in making selection, usage, installation and maintenance decisions. Customer's selection and usage of Murrine Mosaics products and the installation procedure and maintenance practice employed by each customer are outside the direction and control of Murrine Mosaics and are strictly and completely the choice and responsibility of each customer and their installer. Murrine Mosaics does not warrantee any product for any specific use, nor any installation procedure or maintenance practice, and expressly disclaims all asserted claims after installation of Murrine Mosaics products.